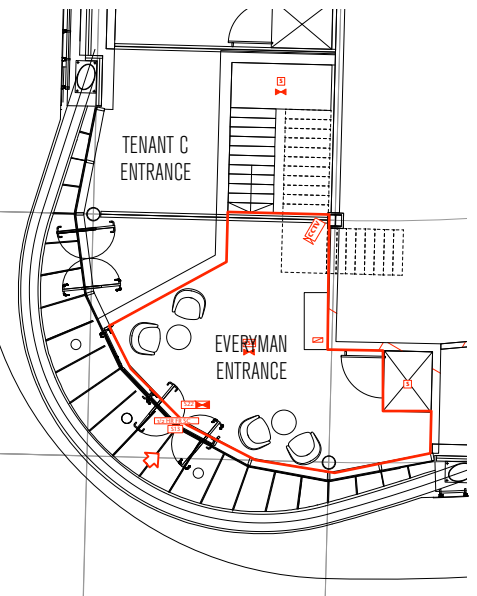


BASEMENT AREA APPROX.	10,730 SQ FT
GROUND AREA APPROX.	350 SQ FT.
TOTAL AREA APPROX.	11,080 SQ FT
AUDITORIUM OCCUPANCY	228
BAR COVERS APPROX	100

- FIRE SAFETY STANDARDS AND TECHNICAL NOTES FOR LICENCING APPLICATIONS**
- DOORS AND PARTITIONS REQUIRED TO BE FIRE RESISTING ARE IN ACCORDANCE WITH BS475, 1972 AS AMENDED
 - FIRE RESISTING DOORS REQUIRED TO RESIST THE PASSAGE OF SMOKE AT AMBIENT TEMPERATURE CONDITIONS ARE, UNLESS TESTED IN ACCORDANCE WITH BS476, SECTION 31.1, 1983, FITTED WITH A SMOKE SEAL
 - THE FIRE ALARM SYSTEM COMPLIES WITH BS 5839 PART 1, 2002. THE ATTENTION OF THE DESIGN/INSTALLING ENGINEER SHOULD BE DRAWN TO PARAGRAPH 3.1 (CONSULTATIONS AND RECORDS) OF BS 5839, PART 1, 2002, WHICH REQUIRES CONSULTATIONS TO BE MADE WITH THE FIRE AUTHORITY.
 - THE EMERGENCY LIGHTING INSTALLATION IS TO COMPLY WITH BS5266, PART 1 1999.
 - THE FIRE ALARM SYSTEM COMPLIES WITH BS 5839 PART 1, 2002. THE ATTENTION OF THE DESIGN/INSTALLING ENGINEER SHOULD BE DRAWN TO PARAGRAPH 3.1 (CONSULTATIONS AND RECORDS) OF BS 5839, PART 1, 2002, WHICH REQUIRES CONSULTATIONS TO BE MADE WITH THE FIRE AUTHORITY.
 - FIRE SAFETY RELATED SIGNS AND NOTICES CONFORM WITH BS5499, PART 1 1999.
 - ILLUMINATED "EXIT" SIGNS CONFORM WITH BS2560
 - FIRE FIGHTING EQUIPMENT TO COMPLY WITH BS5423, 1987, AND BS5306 PART 3 1985.
 - UPHOLSTERED SEATING FURNITURE MUST SATISFY, AS A MINIMUM STANDARD IGNITION SOURCE (CIGARETTE TEST) AND CRIB IGNITION SOURCE 5 AS SPECIFIED IN BS 5852:1999, "METHODS OF TEST FOR ASSESSMENT OF THE IGNITABILITY OF UPHOLSTERED SEATING BY SMOLDERING AND FLAMING IGNITION SOURCES"
 - IF IN ORDER TO SOURCE COMPLIANCE WITH THE ABOVE STANDARDS THE FABRIC SUBMITTED FOR TEST BEEN TESTED BEFORE HAND WITH A FIRE RETARDANT PRODUCT, THE TESTING LABORATORY MUST BE INSTUCTED TO SUBJECT TO SUBJECT THE SAMPLES SO TREATED TO WATER SOAK TEST. IN ACCORDANCE WITH BS3851, 1989, PARAGRAPH 3, BEFORE THE BS 5852 TESTS ARE CARRIED OUT.
 - A COPY OF THE LABORATORY TEST REPORT FROM AN ACCREDITED TESTING LABORATORY IDENTIFYING COMPLIANCE OF THE FURNISHING COMPOSITE WITH THE ABOVE MENTIONED BRITISH STANDARDS MUST BE FORWARDED TO THIS AUTHORITY BEFORE INSTALLATION AND CONFIRMATION THAT THE FURNISHINGS SPECIFIED IN THIS CERTIFICATE HAVE BEEN INSTALLED IN THE PREMISES.
 - CURTAINS AND OTHER TEXTILE HANGINGS MUST BE INHERENTLY FLAME RETARDANT ORL BE TREATED WITH A DURABLE FLAME RETARDANT. THEY MUST CAPABLE OF COMPLYING WITH "TYPE B" PERFORMANCE REQUIREMENTS AS SET OUT BY BS5867, PART 2 1980, "SPECIFICATION FOR FABRICS FOR CURTAINS AND DRAPES - FLAMMABILITY REQUIREMENTS"
 - ARTIFICIAL FOLIAGE AND OTHER DECORATIVE EFFECTS ARE TO BE FIRE RETADANT TO THE SATISFACTION OF THE FIRE AUTHORITY.
 - LININGS AND SURFACE FINISHES OF WALLS AND CEILINGS HAVE A SURFACE SPREAD OF FLAME RATING AS DEFINED IN THE BUILDING REGS 1991
 - TEXTILE FLOOR COVERINGS CONFORM TO BS5287 WHEN TESTED IN ACCORDANCE WITH BS4799, 1987
 - CERTIFICATES OF INSTALLATION TEST WILL BE REQUIRED IN RESPECT OF ITEMS NUMBERED 3,4,6,8 AND 9 ABOVE AND MAY BE REQUIRED FOR ITEM 2.
 - ALL FIRE ESCAPE DOORS TO INCORPORATE PANIC TYPE-OPENING LATCHES FOR EMERGENCY ESCAPE.

KEY - FIRE SAFETY

	ALARM SOUNDER
	FIRE INDICATOR PANEL
	EMERGENCY LIGHTING 3 HOUR NON MAINTAINED
	SMOKE DETECTOR
	SMOKE DETECTOR, ELECTRONIC VOICE SOUNDER AND BEACON UNIT
	HEAT DETECTOR, ELECTRONIC VOICE SOUNDER AND BEACON UNIT
	HEAT DETECTOR
	VOID DETECTION
	Co2 EXTINGUISHER
	FOAM EXTINGUISHER
	WATER EXTINGUISHER
	WET CHEMICAL EXTINGUISHER
	CALL POINT
	FIRE BLANKET
	1/2 HOUR FIRE RESISTANT SELF CLOSING DOOR WITH SMOKE SEALS AND INTUMESCENT STRIPS
	1 HOUR FIRE RESISTANT SELF CLOSING DOOR WITH SMOKE SEALS AND INTUMESCENT STRIPS
	FIRE EXIT DOORS FITTED WITH EMERGENCY PUSH BAR FACILITY
	SIMPLE FASTENING
	VISION PANEL
	SIGN: EMERGENCY EXIT NOTICE - INDICATES THAT THE NOTICE IS INTERNALLY ILLUMINATED
	SIGN: FIRE DOOR KEEP SHUT
	SIGN: FIRE DOOR KEEP LOCKED
	SIGN: FIRE DOOR KEEP CLEAR
	POINT OF CUSTOMER ACCESS
	CCTV CAMERA
	MANUAL CALL POINT
	ANSUL PULL SWITCH



1 BASEMENT LAYOUT
1:100 @ A1 / 1:200 @ A3

APPENDIX B

2 GROUND FLOOR LAYOUT
1:100 @ A1 / 1:200 @ A3

FUSION
design and architecture

4 Riborough Street London SE1 OHE
Tel: 020 7928 9982 Fax: 020 7928 9994
email: mail@fusionna.co.uk

Job Name:	EVERYMAN CINEMA BURY ST EDMUNDS
Site Address:	
Drg Name:	LICENSING
Status:	FOR INFORMATION
Drawn by:	LW/HK
Scale:	1:100@A1 1:200@A3
Checked by:	
Date:	JAN 2023
Job/Drg No.:	106.BSE/SK03 /